

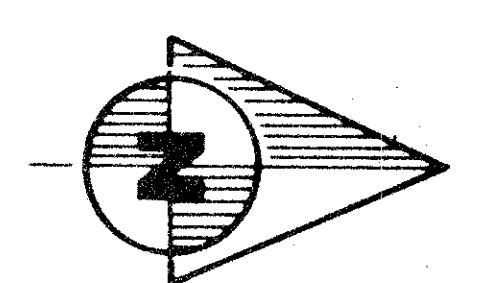
52/100

100
52

WINDSOR WAY - PLAT NO. I OF PALM BEACH POLO AND COUNTRY CLUB - WELLINGTON - P.U.D.

IN PART OF SECTION 14, TWP. 44 S., RGE. 41 E.
PALM BEACH COUNTY, FLORIDA.

DATE: SEPT. 1985 SHEET 2 OF 2 SHEETS

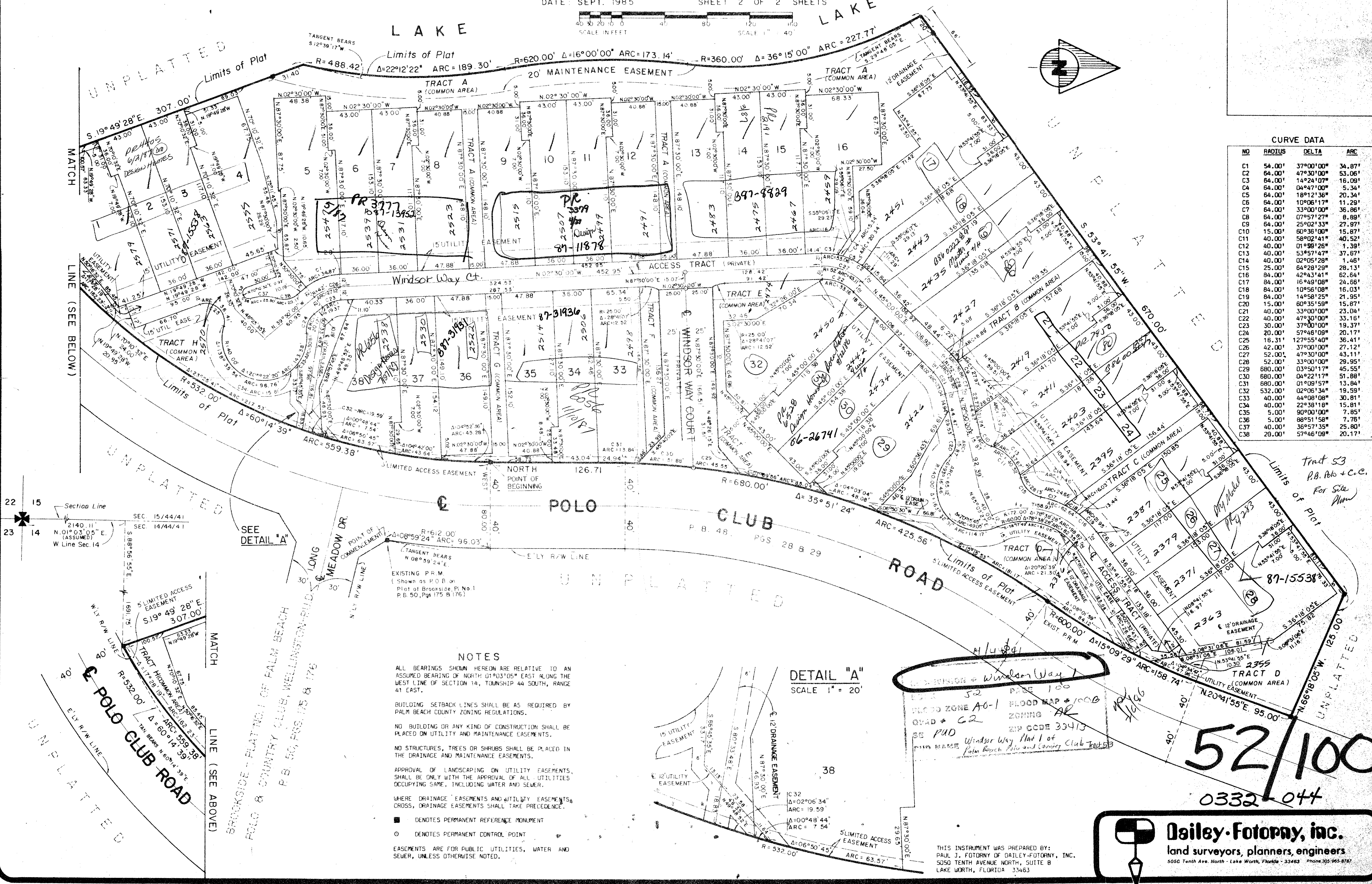


DRAWING NUMBER

DRAWING NUMBER

DRAWING NUMBER

NO	RADIUS	DELTA	ARC
C1	54.00'	37°00'00"	34.87'
C2	64.00'	47°30'00"	53.06'
C3	64.00'	14°24'07"	16.08'
C4	64.00'	04°47'00"	5.34'
C5	64.00'	18°12'36"	20.34'
C6	64.00'	10°06'17"	11.29'
C7	64.00'	33°00'00"	36.88'
C8	64.00'	07°57'27"	6.89'
C9	64.00'	25°02'33"	27.87'
C10	15.00'	60°36'00"	15.87'
C11	40.00'	58°02'41"	40.52'
C12	40.00'	01°58'26"	1.39'
C13	40.00'	53°57'47"	37.87'
C14	40.00'	02°05'28"	1.46'
C15	25.00'	64°28'28"	28.13'
C16	84.00'	42°43'41"	62.84'
C17	84.00'	16°48'08"	24.56'
C18	84.00'	10°56'08"	16.03'
C19	84.00'	14°58'25"	21.95'
C20	15.00'	60°35'59"	15.87'
C21	40.00'	33°00'00"	23.04'
C22	40.00'	47°30'00"	33.16'
C23	30.00'	37°00'00"	19.37'
C24	20.00'	57°46'08"	20.17'
C25	16.31'	127°55'40"	36.41'
C26	42.00'	37°00'00"	27.12'
C27	52.00'	47°30'00"	43.11'
C28	52.00'	33°00'00"	29.58'
C29	880.00'	03°50'17"	45.55'
C30	880.00'	04°22'17"	51.88'
C31	880.00'	01°06'57"	13.84'
C32	532.00'	02°06'34"	19.59'
C33	40.00'	44°08'08"	30.81'
C34	40.00'	22°38'18"	15.81'
C35	5.00'	90°00'00"	7.85'
C36	5.00'	88°51'58"	7.76'
C37	40.00'	36°57'35"	25.80'
C38	29.00'	57°46'09"	20.17'



NOTES

ALL BEARINGS SHOWN HEREON ARE RELATIVE TO AN ASSUMED BEARING OF NORTH 01°03'05" EAST ALONG THE WEST LINE OF SECTION 14, TOWNSHIP 44 SOUTH, RANGE 41 EAST.

BUILDING SETBACK LINES SHALL BE AS REQUIRED BY PALM BEACH COUNTY ZONING REGULATIONS.

NO BUILDING OR ANY KIND OF CONSTRUCTION SHALL BE PLACED ON UTILITY AND MAINTENANCE EASEMENTS.

NO STRUCTURES, TREES OR SHRUBS SHALL BE PLACED IN THE DRAINAGE AND MAINTENANCE EASEMENTS.

APPROVAL OF LANDSCAPING ON UTILITY EASEMENTS, SHALL BE ONLY WITH THE APPROVAL OF ALL UTILITIES OCCUPYING SAME, INCLUDING WATER AND SEWER.

WHERE DRAINAGE EASEMENTS AND UTILITY EASEMENTS CROSS, DRAINAGE EASEMENTS SHALL TAKE PRECEDENCE.

■ DENOTES PERMANENT REFERENCE MONUMENT
○ DENOTES PERMANENT CONTROL POINT

EASEMENTS ARE FOR PUBLIC UTILITIES, WATER AND SEWER, UNLESS OTHERWISE NOTED.

DETAIL "A"
SCALE 1" = 20'

WINDSOR WAY - Windsor Way
52 PAGE 100
FLOOD ZONE A0-1 FLOOD MAP # 1000
ZONING AR
BE PUD ZIP CODE 33410
SEE BEARING Windsor Way Plat I of Palm Beach Polo and Country Club Tract 53

52/100
0332-044

Dailey-Fotorny, inc.
land surveyors, planners, engineers
5050 Tenth Ave. North - Lake Worth, Florida - 33463 Phone 305/965-8187

THIS INSTRUMENT WAS PREPARED BY:
PAUL J. FOTORNY OF DAILEY-FOTORNY, INC.
5050 TENTH AVENUE NORTH, SUITE B
LAKE WORTH, FLORIDA 33463